

Light efficiency:

77 Lumen/Watt

Light quality:

CRI: 80.7

Color temperature:

3075 K

Output: 3152 lm

Peak: 9807 cd

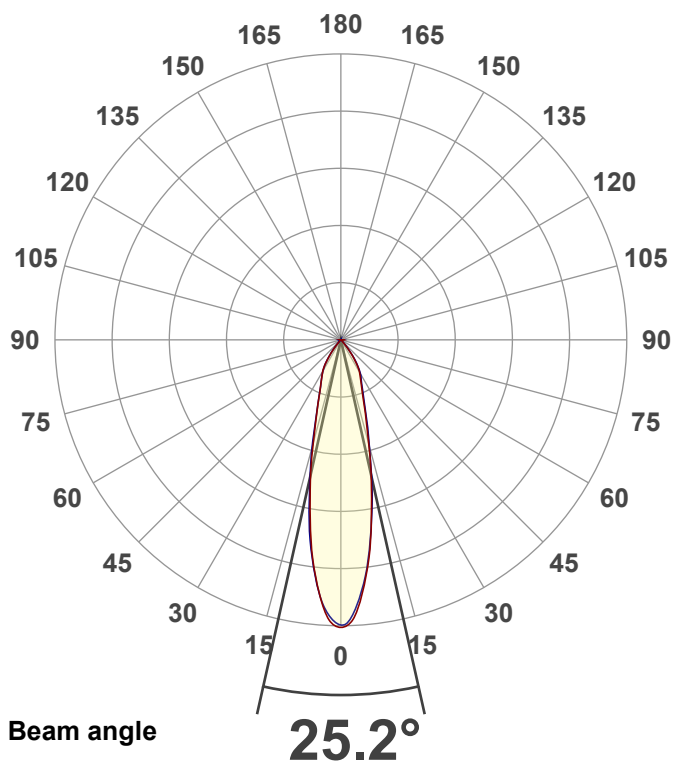
Power: 40.7 W

PF: 0.98



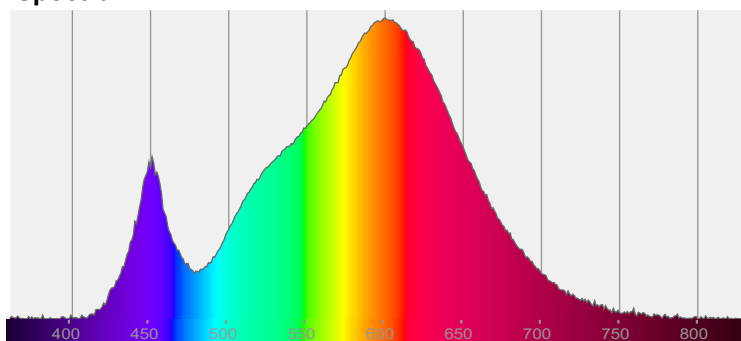
NU3-RD-SW-40LM-30K-80-25D-CL-WH-WH

Date and time:  
11/9/2020 1:13:42 PM

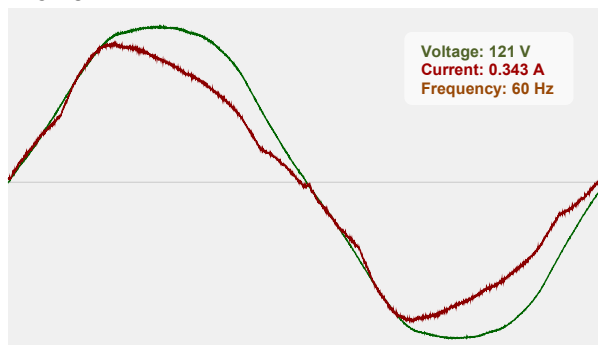


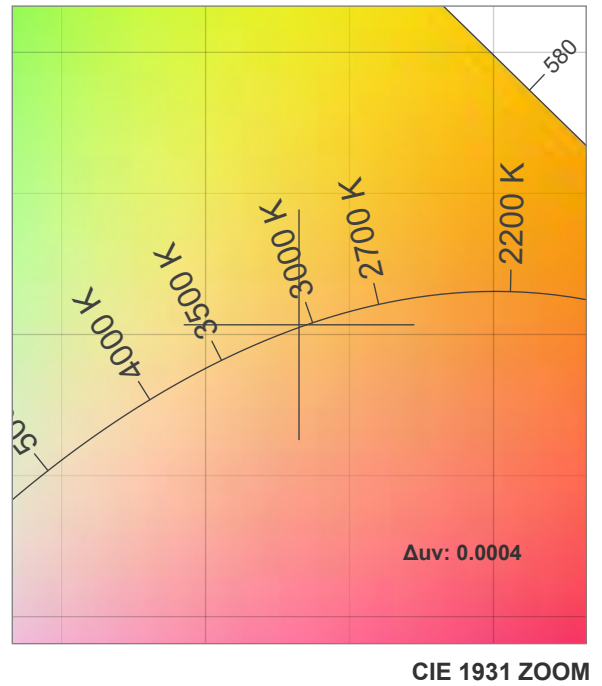
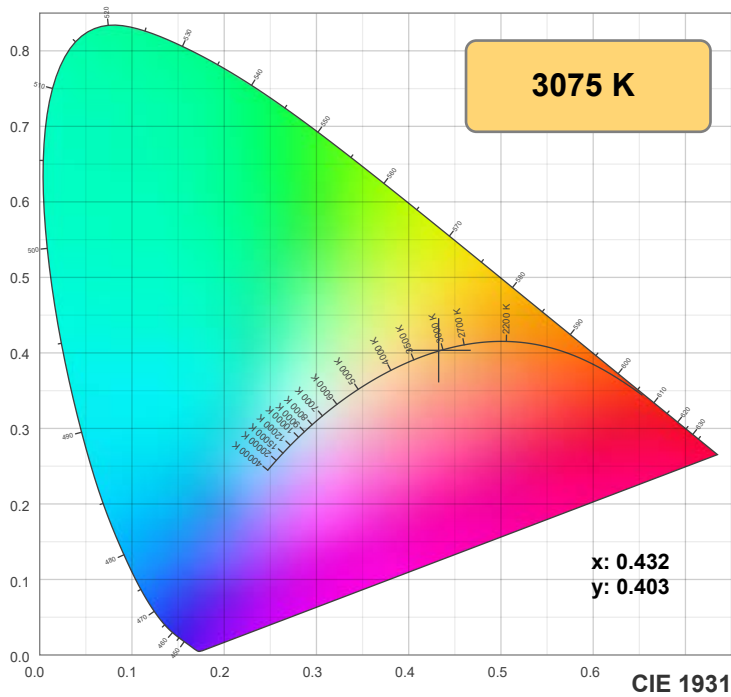
CIE 1931  
x: 0.432  
y: 0.403

Spectra

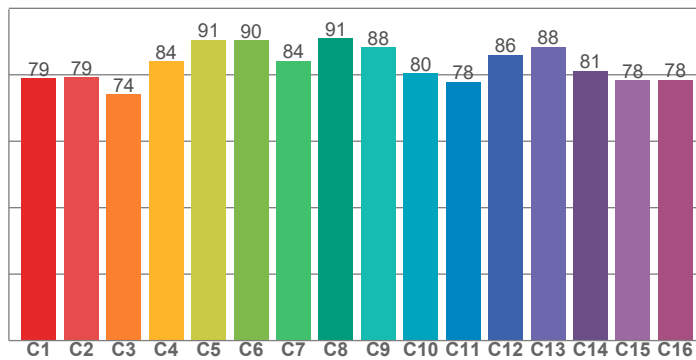


Power

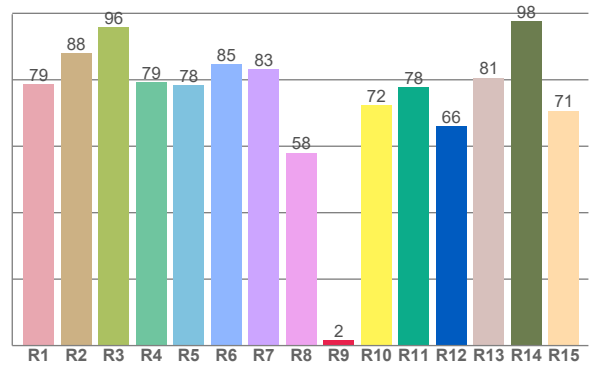




**TM30: 83.0**



**CRI: 80.7 (R1-R8)**



CRI R values, only R1-R8 are used to calculate final CRI value

R1	R2	R3	R4	R5	R6	R7	R8	R9	R10	R11	R12	R13	R14	R15
78.6	88.1	95.9	79.3	78.3	84.6	83.2	58.0	1.5	72.4	77.8	66.0	80.6	97.7	70.7

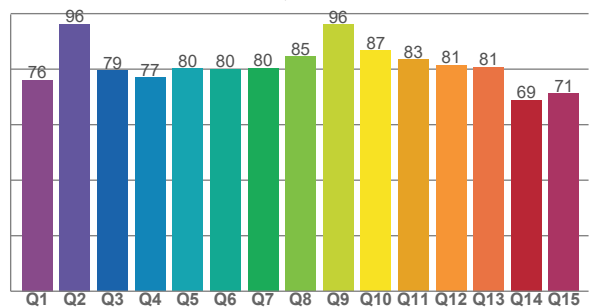
TM30 C values, 16 binned values out of total of 99 C values

C1	C2	C3	C4	C5	C6	C7	C8	C9	C10	C11	C12	C13	C14	C15	C16
78.9	79.3	74.1	84.0	90.5	90.3	84.1	91.0	88.3	80.4	77.9	86.0	88.4	81.2	78.3	78.5

CQS Q values

Q1	Q2	Q3	Q4	Q5	Q6	Q7	Q8	Q9	Q10	Q11	Q12	Q13	Q14	Q15
76.1	96.3	79.5	76.9	80.2	80.1	80.4	84.6	96.0	86.7	83.5	81.4	80.7	68.9	71.3

**CQS: 80.0**



## Color parameters

Color temperature	Color rendering index	Red component	Color fidelity	Color gamut	Color quality scale	Color coordinate cie 1931	Color coordinate cie 1931	Color coordinate	Color coordinate	Color deviation from black body
CCT	CRI	CRI R9	TM30 Rf	TM30 Rg	CQS	x	y	u	v	Δuv
3075 K	80.7	1.5	83.0	96.8	80.0	0.432	0.403	0.248	0.347	0.0004

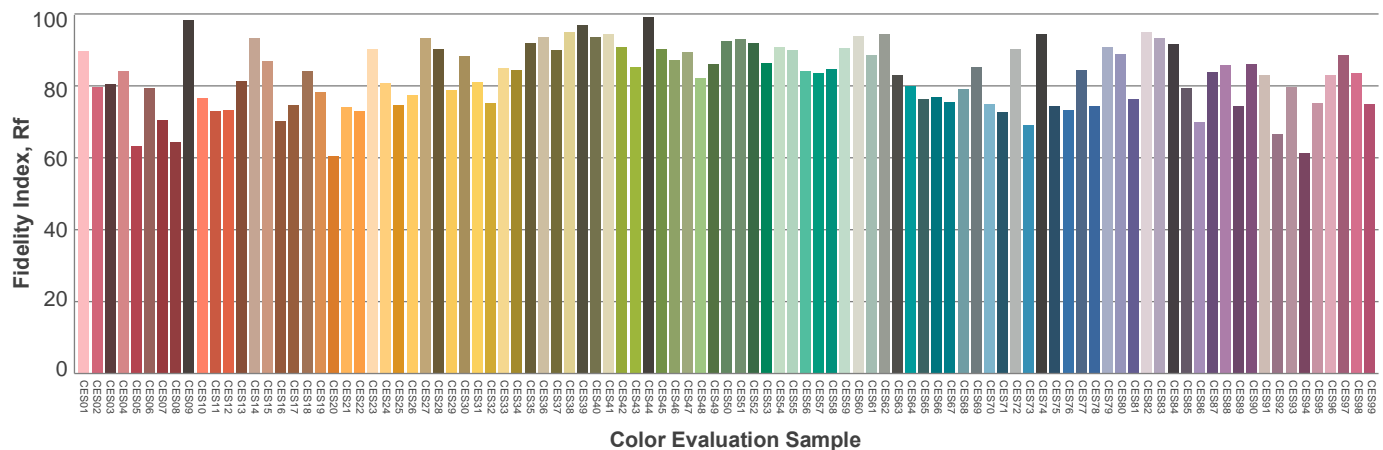
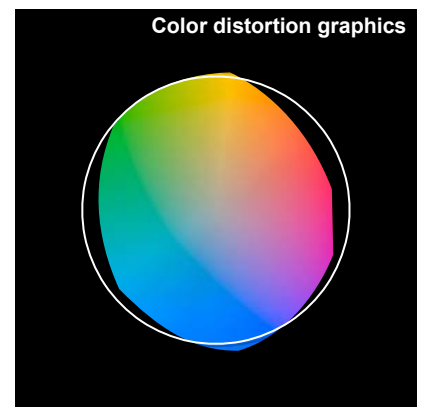
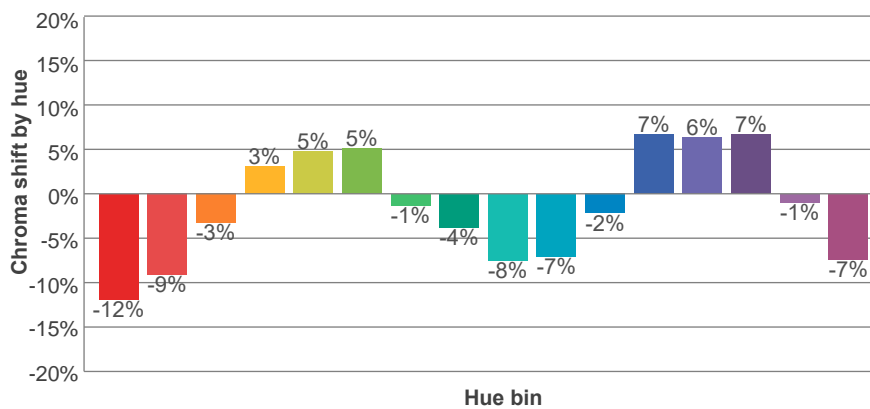
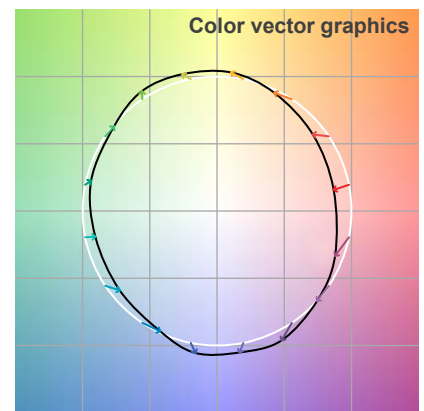
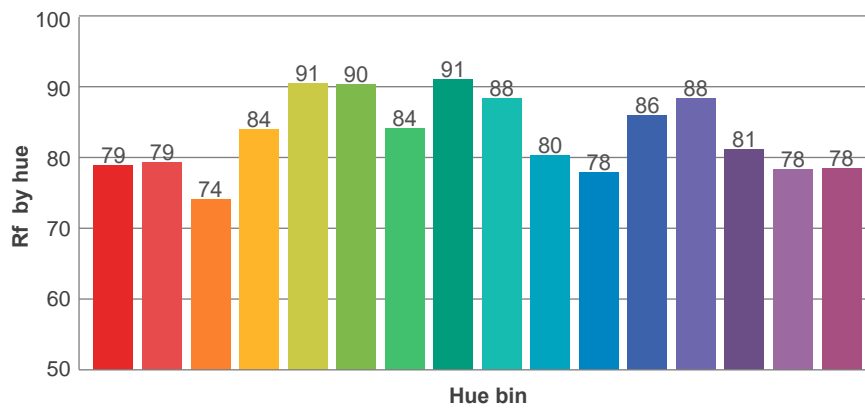
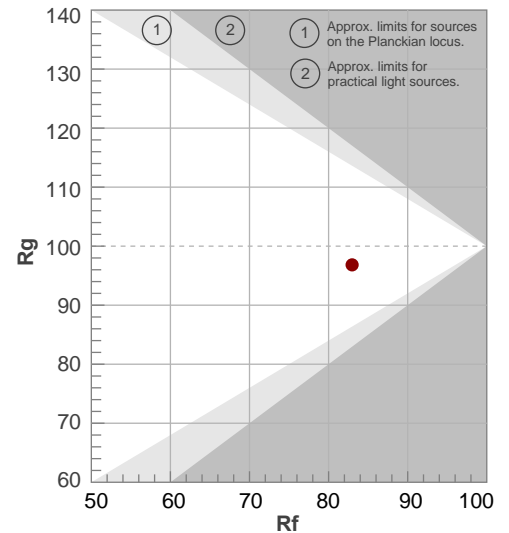
**Rf 83.0**

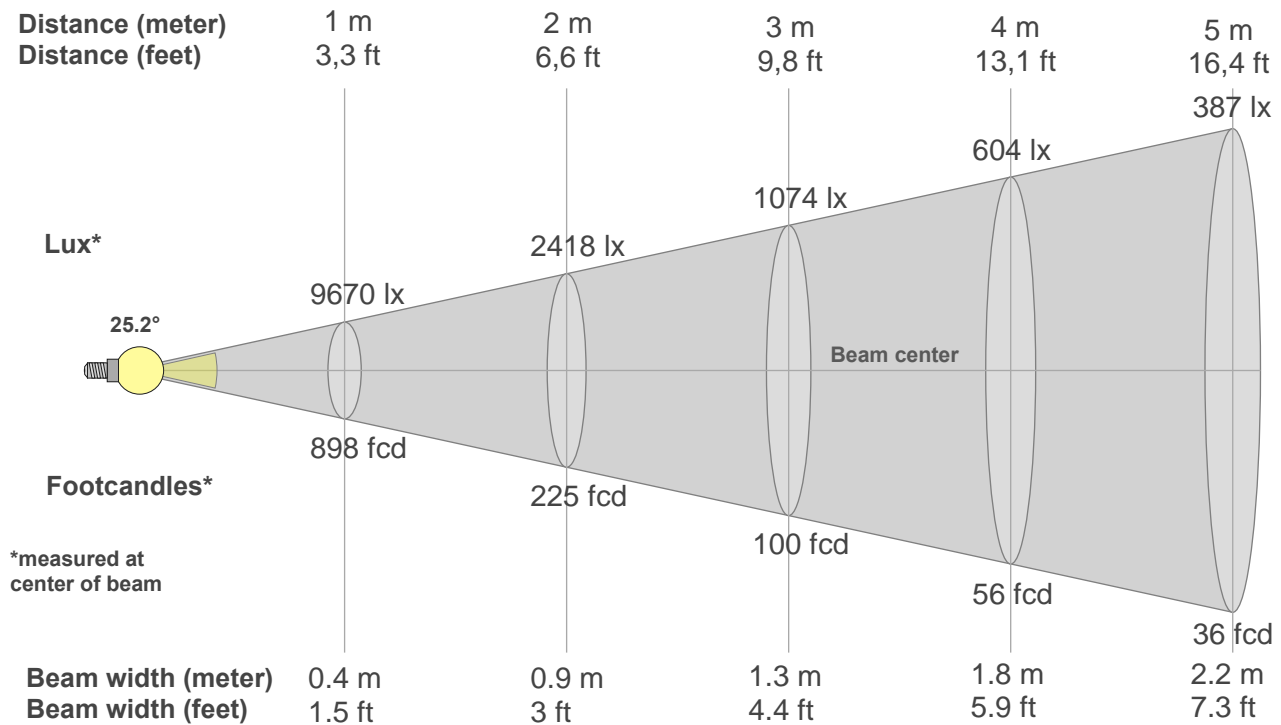
Fidelity index Rf

**Rg 96.8**

Gamut index Rg

Hue Bin	R <sub>f</sub>	Graphic shifts (%)	
		Chroma	Hue
1	79	-12%	-2%
2	79	-9%	8%
3	74	-3%	13%
4	84	3%	10%
5	91	5%	5%
6	90	5%	-3%
7	84	-1%	-10%
8	91	-4%	-4%
9	88	-8%	1%
10	80	-7%	9%
11	78	-2%	15%
12	86	7%	5%
13	88	6%	-4%
14	81	7%	-14%
15	78	-1%	-14%
16	78	-7%	-16%





#### Beam intensities from 1-20m

1m	2m	3m	4m	5m	6m	7m	8m	9m	10m	11m	12m	13m	14m	15m	16m	17m	18m	19m	20m
3.3ft	6.6ft	9.8ft	13.1ft	16.4ft	19.7ft	23ft	26.2ft	29.5ft	32.8ft	36.1ft	39.4ft	42.7ft	45.9ft	49.2ft	52.5ft	55.8ft	59.1ft	62.3ft	65.6ft
9670lx	2418lx	1074lx	604lx	387lx	269lx	197lx	151lx	119lx	97lx	80lx	67lx	57lx	49lx	43lx	38lx	33lx	30lx	27lx	24lx
898.4fcd	224.6fcd	99.8fcd	56.1fcd	35.9fcd	25fcd	18.3fcd	14fcd	11.1fcd	9fcd	7.4fcd	6.2fcd	5.3fcd	4.6fcd	4fcd	3.5fcd	3.1fcd	2.8fcd	2.5fcd	2.2fcd

#### Intensities in 0° c-plane

0°	2°	4°	6°	8°	10°	12°	14°	16°	18°	20°	22°	24°	26°	28°	30°	32°	34°	36°	38°
9670	9667	9011	8161	7237	6161	5084	4253	3451	2821	2402	1985	1786	1586	1419	1277	1126	915	704	506
100%	100%	93%	84%	75%	64%	53%	44%	36%	29%	25%	21%	18%	16%	15%	13%	12%	9%	7%	5%

#### Intensities in 90° c-plane

0°	2°	4°	6°	8°	10°	12°	14°	16°	18°	20°	22°	24°	26°	28°	30°	32°	34°	36°	38°
9670	9487	8830	8158	7158	6158	5219	4318	3480	2962	2444	2113	1854	1627	1484	1341	1153	956	751	534
100%	98%	91%	84%	74%	64%	54%	45%	36%	31%	25%	22%	19%	17%	15%	14%	12%	10%	8%	6%

#### Intensities in 180° c-plane

0°	2°	4°	6°	8°	10°	12°	14°	16°	18°	20°	22°	24°	26°	28°	30°	32°	34°	36°	38°
9670	9673	9014	8177	7254	6171	5087	4232	3402	2767	2351	1941	1744	1547	1380	1235	1080	866	652	461
100%	100%	93%	85%	75%	64%	53%	44%	35%	29%	24%	20%	18%	16%	14%	13%	11%	9%	7%	5%

#### Intensities in 270° c-plane

0°	2°	4°	6°	8°	10°	12°	14°	16°	18°	20°	22°	24°	26°	28°	30°	32°	34°	36°	38°
9670	9404	9089	8202	7315	6324	5272	4280	3537	2793	2346	1995	1704	1542	1380	1215	1050	864	649	435
100%	97%	94%	85%	76%	65%	55%	44%	37%	29%	24%	21%	18%	16%	14%	13%	11%	9%	7%	4%

Beam angle 50%	Field angle 10%	Cutoff angle 2,5%	Intensity ratio in 120° cone	Intensity ratio in 90° cone
25.2°	66.6°	81.5°	99.5%	98.9%